



## **EUROFINS PRODUCT SAFETY LABS (EPSL)**

### **RESIDUE CHEMISTRY AND METABOLISM SERVICES**

EPSL offers GLP compliant pesticide residue/metabolism analytical services to support the agrochemical industry's regulatory needs. Our staff includes a team of talented scientists with over 75 years of combined experience conducting pesticide analyses in a wide variety of matrices (crops/soils/water). A fully dedicated pesticide residue analysis laboratory includes spatially separated sample processing, extraction and instrument rooms. The laboratory is equipped with state-of-the-art instrumentation and includes ample freezer (-18°C) and refrigeration storage space.

#### **Our portfolio of services includes:**

##### ***Residue analytical study support***

- Magnitude of Residues in field crops (RAC and processed matrices)
- Terrestrial and aquatic dissipation
- Groundwater monitoring/leaching
- Storage stability
- Operator exposure
- Ecotox/Aquatic tox

In addition, EPSL offers method development, optimization, and Independent Laboratory Validation (ILV) services.



##### ***Metabolism/Environmental Fate study management***

EPSL provides total management of agrochemical metabolism/environmental fate studies using [<sup>14</sup>C]radio-labelled test materials. This includes protocol preparation, guidance on [<sup>14</sup>C] test substance preparation, management of in-life and analytical study phases, Quality Assurance support, and final report preparation. Areas of focus include:

- Plant metabolism
- Confined rotational crops
- Environmental fate
- Mammalian metabolism

##### ***GLP Compliance***

EPSL has been conducting GLP compliant studies for over 20 years and is routinely monitored by both the EPA and FDA. In addition to agency inspections approximately every two years, EPSL is also frequently inspected by clients, quality consultants, and the USDA.

## ***Instrumentation***

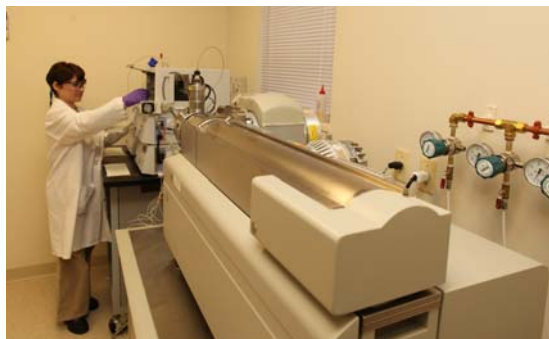
Two LC/MS/MS systems (API Sciex 4000) are dedicated to residue sample analysis.

Other available instrumentation includes:

- HPLC (MS, UV, RI, ECD or fluorescence detection)
- GC/MS
- GC with EC or FID detection

Please visit our website for a complete list of instrumentation.

[www.productsafetylabs.com](http://www.productsafetylabs.com)



## ***Total Testing Solutions***

Through collaboration with Eurofins Agroscience Services, Inc. (EASI), we offer complete residue and metabolism testing programs, including field trial design, execution, and sample analyses. A vast network of field sites throughout North America allows EPSL and EASI to provide all your pesticide residue and metabolism testing needs.

For more information on EASI field testing services, please visit:

[www.eurofinsagro.com/field-studies.aspx](http://www.eurofinsagro.com/field-studies.aspx)



## ***Other EPSL Services***

EPSL also provides a wide array of GLP testing services for clients in the agrochemical industry, including:

- Acute toxicology (six packs)
- Sub-chronic/reproductive toxicology
- Product chemistry and storage stability
- Preliminary analysis (5-batch)
- Genetic toxicology
- Endocrine disrupter testing

For a complete description of EPSL services and pricing, please visit our website:

[www.productsafetylabs.com](http://www.productsafetylabs.com)

For all inquiries, please contact:

Dr. N. Moorthy Mallipudi  
Director of Chemical Services  
Eurofins Product Safety Labs  
2394 US Highway 130, Suite E  
Dayton, New Jersey 08810  
Office: 732-438-5100 ext 367

[E-mail: moorthymallipudi@eurofinsus.com](mailto:moorthymallipudi@eurofinsus.com)